



PHOTO: KIELY RAMOS

7 Steps TO CHOOSING THE PERFECT WHITE PAINT

STORY **AMANDA SHIELDS**



The search for the ideal shade of white can be a daunting task. White paint may seem simple, but variations in undertones and finishes can leave your head spinning. Join me as I share my foolproof process for choosing the perfect white paint hues for your home.

1. Consider Natural Lighting

Before diving into the myriad of white shades, evaluate the natural lighting in your space. North-facing rooms tend to have cooler light, while south-facing rooms are warmer. East-facing rooms receive bright morning light, while west-facing rooms are illuminated by afternoon and evening sun. Understanding your room's lighting will help you choose the right white with the ideal undertones.

2. Determine The Atmosphere

The ambience you want to create plays a crucial role in selecting white paint. If you desire a clean, crisp feel, opt for a pure white shade like Benjamin Moore Chantilly Lace, a designer favourite. For a warmer and cosier atmosphere, consider whites with yellow or beige undertones like Benjamin Moore Simply White. If you seek a modern and sophisticated look, cooler whites with grey or blue undertones may be more suitable, such as Benjamin Moore Designer White.

3. Consider Undertones

White paints can have undertones that subtly influence the overall look of a room. Common undertones include blue, grey, green, beige and yellow. To prevent a clash with other elements in your space, consider the undertones of your furniture, flooring and fixtures. Warm undertones pair well with warm colours, while cooler undertones complement cool colours.

4. Test Before Committing

Always test paint samples before committing to a particular shade. Apply large swatches of white paint on different walls in your room and observe how they appear in various lighting conditions. One product I love to use is from Hello Paint, where you can order peel and stick paint swatches that can easily move from room to room. Assess the samples at different times of the day to see how they respond to changing natural light. This process will help you choose a shade that harmonizes with your space.

5. Evaluate Contrast

White paint doesn't exist in isolation. Consider how your chosen white will interact with other elements in the room. If you have vibrant or dark-coloured furniture, a pure white may create a striking contrast. Alternatively, if you prefer a more harmonious look, consider selecting a white shade that is like the colour of your furniture or other design elements.

6. Consider The Finish

The finish of the paint can significantly impact the final appearance of your walls. Matte or flat finishes create a soft, smooth look but are more prone to marks and smudges. Satin or eggshell finishes offer a slight sheen and are more durable, making them suitable for high-traffic areas. Glossy finishes provide a dramatic shine but are best reserved for trim or accent areas.

7. Seek Professional Advice

Seeking professional advice is a wise step if you find yourself uncertain about choosing the perfect white paint. Interior designers or colour consultants can offer valuable insights and help you select the best shade to suit your needs.

Remember, choosing the right white paint in your home may seem daunting, but armed with the knowledge of lighting, undertones, atmosphere, and finishes, you can make an informed decision. Remember to test samples in your space, consider contrast and seek professional advice if needed. With these tips, you'll be well on your way to finding the perfect white paint that will enhance the beauty and character of your home. **OH**

Amanda Shields is the principal designer at Amanda Shields Interiors.



PHOTO: MIKE CHAJECKI



PHOTO: LARRY ARNAL



PHOTO: KIELY RAMOS



7 Steps

STORY AMANDA SHIELDS

TO CHOOSING THE PERFECT WHITE PAINT

The search for the ideal shade of white can be a daunting task. White paint may seem simple, but variations in undertones and finishes can leave your head spinning. Join me as I share my foolproof process for choosing the perfect white paint hues for your home.

1. Consider Natural Lighting

Before diving into the myriad of white shades, evaluate the natural lighting in your space. North-facing rooms tend to have cooler light, while south-facing rooms are warmer. East-facing rooms receive bright morning light, while west-facing rooms are illuminated by afternoon and evening sun. Understanding your room's lighting will help you choose the right white with the ideal undertones.

2. Determine The Atmosphere

The ambience you want to create plays a crucial role in selecting white paint. If you desire a clean, crisp feel, opt for a pure white shade like Benjamin Moore Chantilly Lace, a designer favourite. For a warmer and cosier atmosphere, consider whites with yellow or beige undertones like Benjamin Moore Simply White. If you seek a modern and sophisticated look, cooler whites with grey or blue undertones may be more suitable, such as Benjamin Moore Designer White.

3. Consider Undertones

White paints can have undertones that subtly influence the overall look of a room. Common undertones include blue, grey, green, beige and yellow. To prevent a clash with other elements in your space, consider the undertones of your furniture, flooring and fixtures. Warm undertones pair well with warm colours, while cooler undertones complement cool colours.

4. Test Before Committing

Always test paint samples before committing to a particular shade. Apply large swatches of white paint on different walls in your room and observe how they appear in various lighting conditions. One product I love to use is from Hello Paint, where you can order peel and stick paint swatches that can easily move from room to room. Assess the samples at different times of the day to see how they respond to changing natural light. This process will help you choose a shade that harmonizes with your space.



PHOTO: MIKE CHAJACK

5. Evaluate Contrast

White paint doesn't exist in isolation. Consider how your chosen white will interact with other elements in the room. If you have vibrant or dark-coloured furniture, a pure white may create a striking contrast. Alternatively, if you prefer a more harmonious look, consider selecting a white shade that is like the colour of your furniture or other design elements.

6. Consider The Finish

The finish of the paint can significantly impact the final appearance of your walls. Matte or flat finishes create a soft, smooth look but are more prone to marks and smudges. Satin or eggshell finishes offer a slight sheen and are more durable, making them suitable for high-traffic areas. Glossy finishes provide a dramatic shine but are best reserved for trim or accent areas.

7. Seek Professional Advice

Seeking professional advice is a wise step if you find yourself uncertain about choosing the perfect white paint. Interior designers or colour consultants can offer valuable insights and help you select the best shade to suit your needs.

Remember, choosing the right white paint in your home may seem daunting, but armed with the knowledge of lighting, undertones, atmosphere, and finishes, you can make an informed decision. Remember to test samples in your space, consider contrast and seek professional advice if needed. With these tips, you'll be well on your way to finding the perfect white paint that will enhance the beauty and character of your home. **OH**

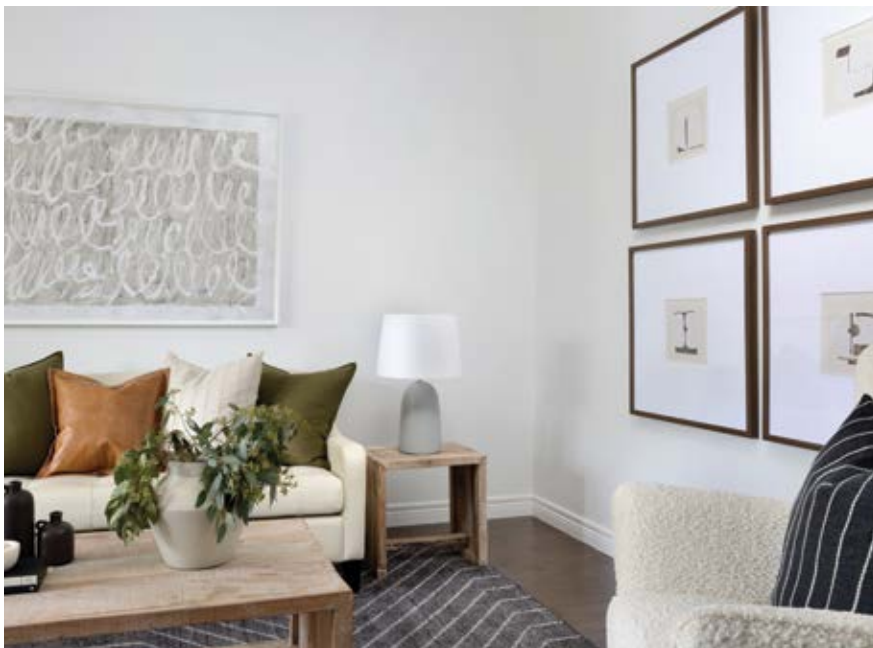


PHOTO: LARRY ARNAL